



Investment Objective & Strategy

The SIV Emerging Companies Portfolio is designed to assist individuals in gaining temporary and eventual permanent residence of Australia through the Significant Investor Visa Stream. The portfolio is designed off the basis of the Value Investment Partners Opportunities portfolio in order to fill the requirements for a Significant Investor Visa (SIV) compliant investment product. The portfolio aims to outperform the S&P/ASX Small Ordinaries Accumulation Index over a rolling 5 year and 7 year period to give our investors added value in a emerging companies investment that fits all SIV requirements. The portfolio, furthermore, intends to maintain its compliance as an SIV product under the rules and guidelines given by 'Migration (IMMI 15/100: Complying Investments) Instrument 2015'.

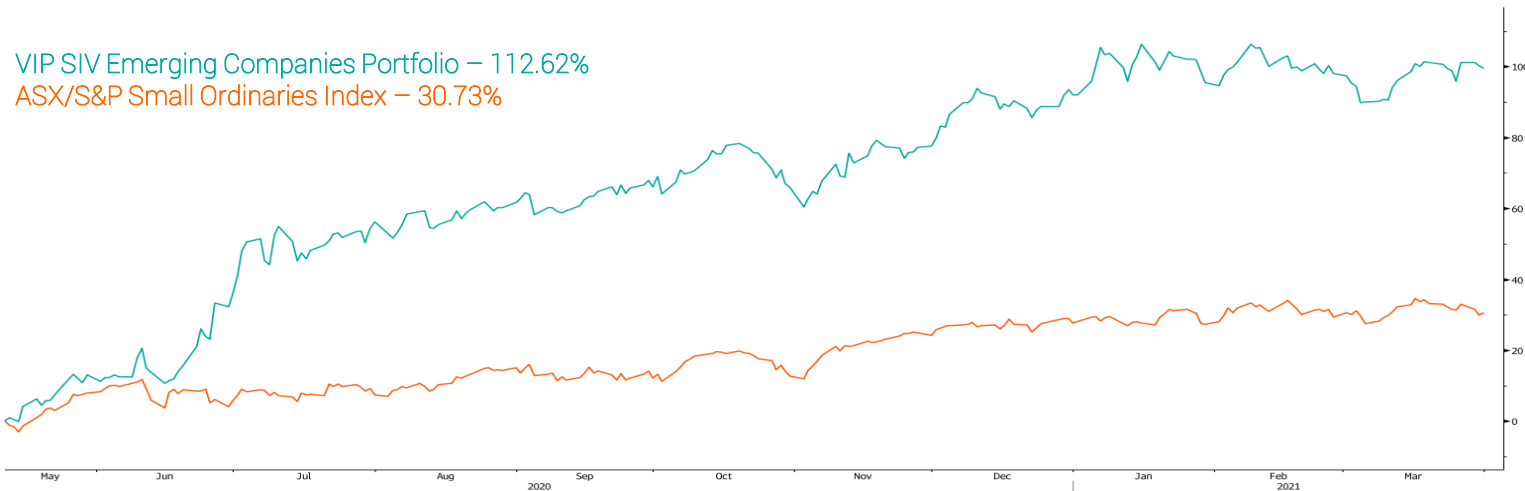
Portfolio Facts

Inception Date	11 th of May 2020
Asset Class	Australian Equities
Management Style	Active Momentum
Number of Holdings Range	15 - 40
Cash Allocation Range	0 - 20%
Index Benchmark	ASX Small Ords
Minimum Investment	\$500,000 AUD
Investment Horizon	4 Years
Entry Fee	Nil
Management Fee	1.50%
Performance Fee	10% of outperformance

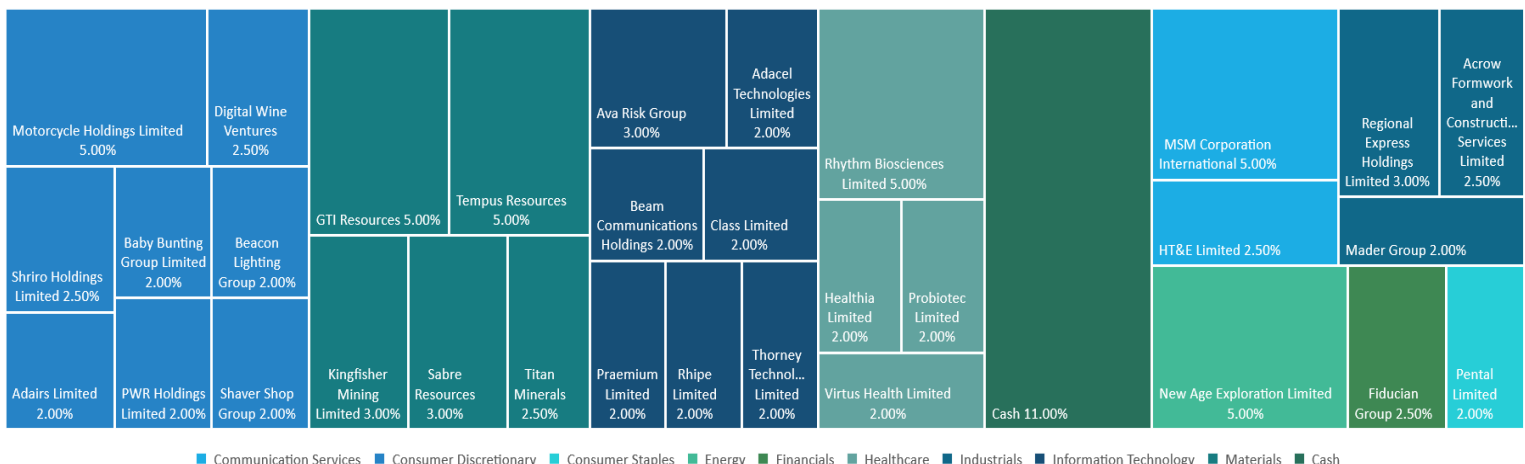
Portfolio Performance

	1 Month	3 Month	6 Month	Since Inception (Total Return)
Gross Returns	0.74%	3.94%	20.12%	112.62%
Net Returns	0.61%	3.57%	19.37%	111.37%
Benchmark Returns	1.05%	2.35%	16.50%	30.73%

VIP SIV Emerging Companies Portfolio – 112.62%
ASX/S&P Small Ordinaries Index – 30.73%



Sector Allocation & Portfolio Holdings



■ Communication Services ■ Consumer Discretionary ■ Consumer Staples ■ Energy ■ Financials ■ Healthcare ■ Industrials ■ Information Technology ■ Materials ■ Cash